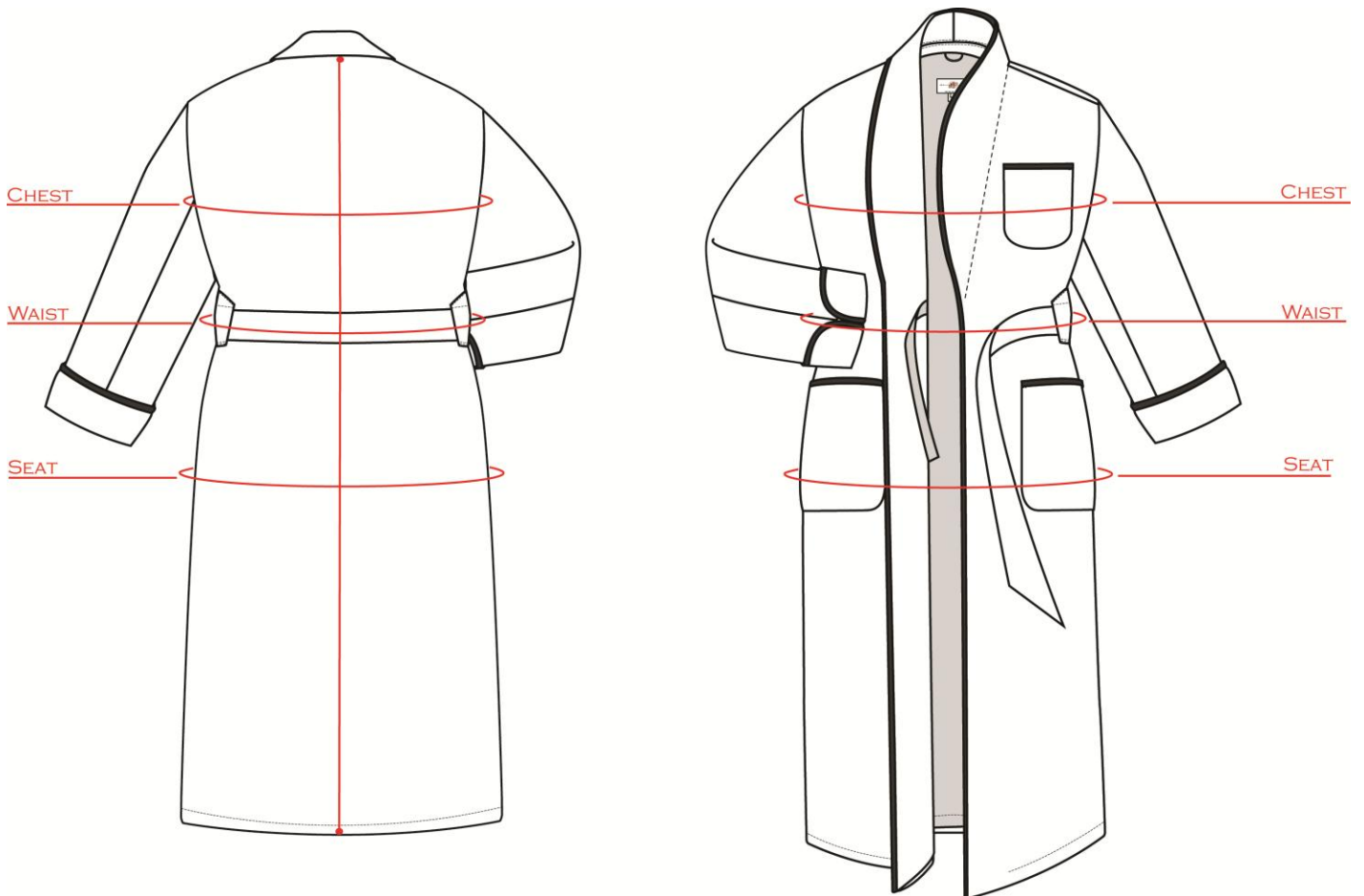




**DANIEL HANSON EXISTING DRESSING GOWN SIZE CHART**

	S	M	L	XL	XXL
<b>TO FIT CHEST</b>	36 – 39" 91.5 – 99 CM	39 – 42" 99 – 107 CM	42 – 45" 107 – 114 CM	45 – 48" 114 – 122 CM	48" – 51" 122 – 129.5CM
<b>TO FIT WAIST</b>	29 – 32" 73.5 – 81 CM	32 – 35" 81 – 89 CM	35 – 38" 89 – 96.5 CM	38 – 41" 96.5 – 104CM	41" – 43" 104 – 109 CM
<b>TO FIT SEAT</b>	39" 99 CM	42" 107 CM	45" 114 CM	48" 122 CM	51" 129.5 CM
<b>GOWN LENGTH NAPE TO HEM</b>	52" 132 CM THIS LENGTH FINISHES APPROXIMATELY AT MID CALF ON A MAN WHO IS 6' TALL				



**MEASUREMENTS WE REQUIRE TO ENSURE WE CAN GIVE YOU THE BEST FIT**  
**(PLEASE REFER TO PICTURE BELOW FOR ASSISTANCE)**

DESCRIPTION	YOUR MEASUREMENT
<p style="color: red;">1 – 2</p> NAPE (COLLAR SEAM ) TO WAIST	
<p style="color: red;">2 – 3</p> WAIST TO FINISHED HEM	
<p style="color: red;">4 – 5</p> NECK TO FINISHED CUFF	
TO ASSIST WITH THIS: PUT ON A SUIT JACKET. ASK SOMEONE TO MEASURE FROM THE POINT THE UNDER COLLAR JOINS THE JACKET BODY (4) TO THE FINISHED SLEEVE LENGTH (5)	

